



# Pima

as manufactured by Shaw Contract



style: pima  
 texture: pattern loop  
 product type: tile 24"x24"  
 fiber: eco solution q® nylon  
 backing: ecoworx® tile  
 protective treatment: ssp® shaw soil protection  
 dye method: 90% solution dyed / 10% yarn dyed  
 face weight: 18.0  
 warranty: lifetime commercial limited

Color images may vary.  
Please request sample before ordering.

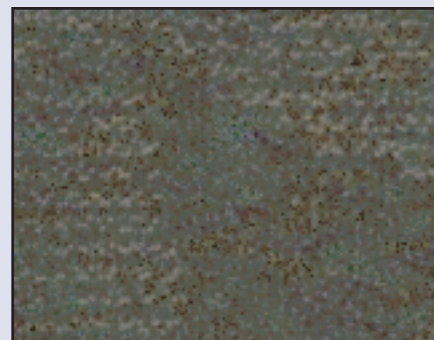
cane



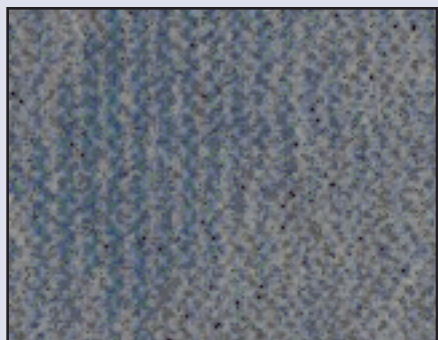
gilded



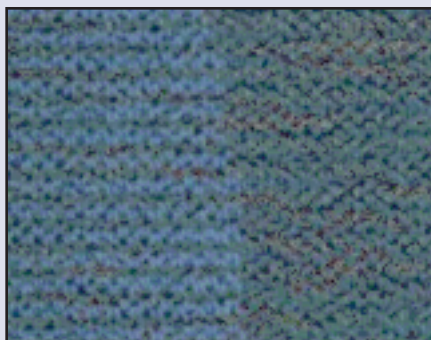
fused glass



urban jungle



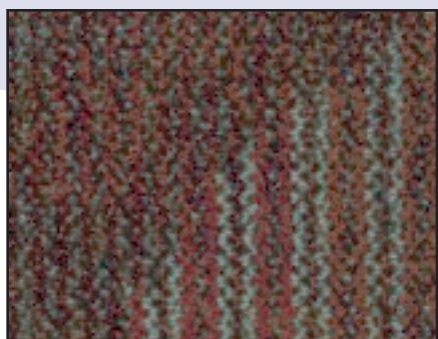
absolute blu



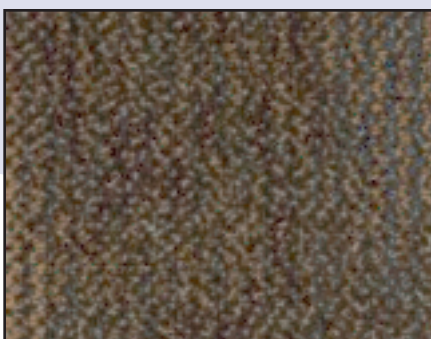
make a splash



be jeweled



color my world



black to business



silver lining



9319 N. 94th Way, Suite 1000  
 Scottsdale, AZ 85258  
 Phone: 800-825-1221 ♦ Fax: 480-945-2603  
 Email: [info@continentalflooring.com](mailto:info@continentalflooring.com)  
[www.continentalflooring.com](http://www.continentalflooring.com)

**GSA** Contract Holder  
 GS-27F-0034R



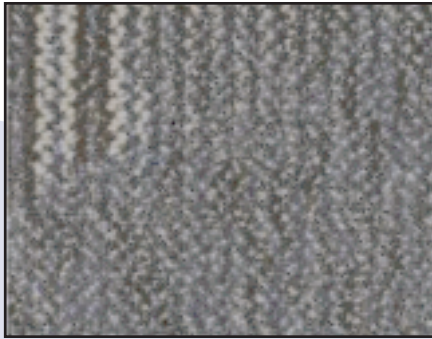


# Pima

as manufactured by Shaw Contract



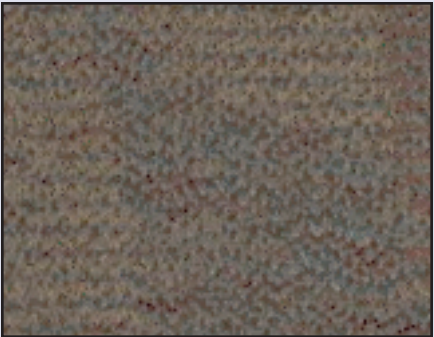
pistachio



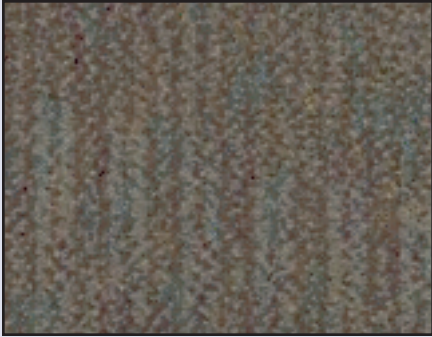
sheer magnetic



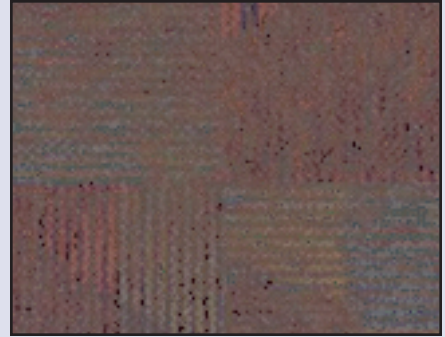
metal guru



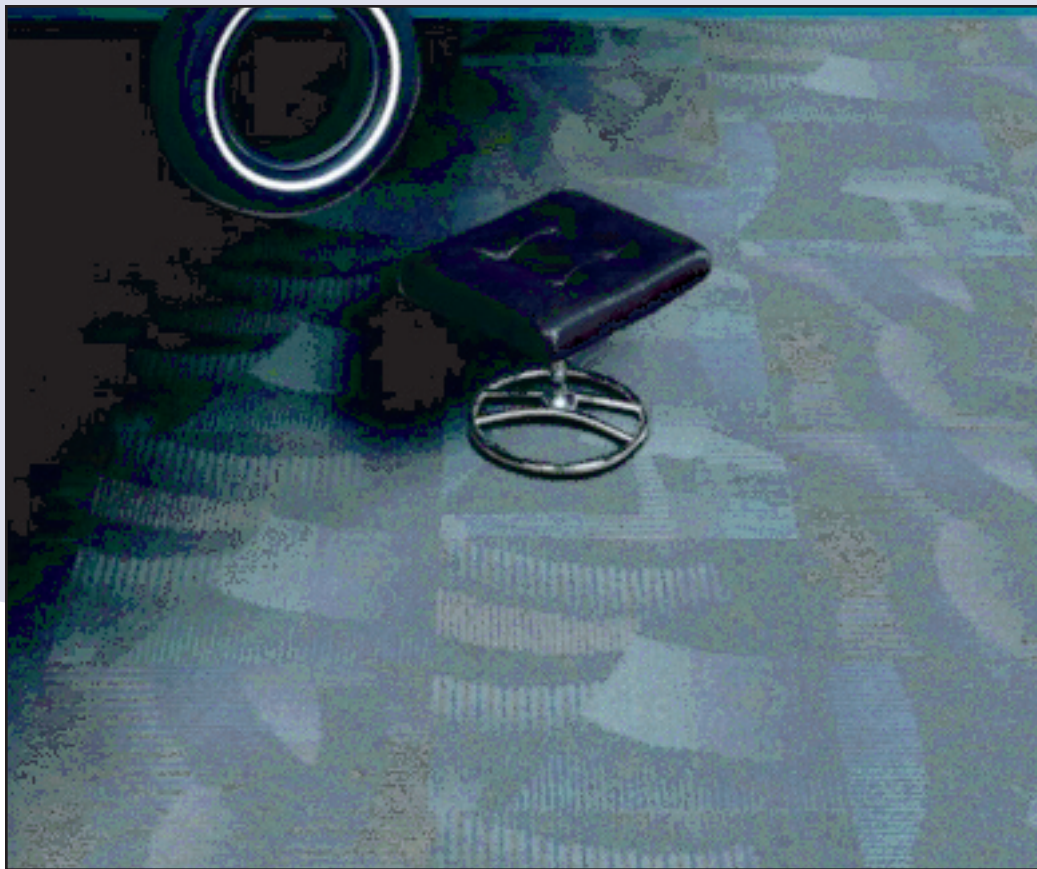
copper frost



chocolate craving



haute stuff



9319 N. 94th Way, Suite 1000  
Scottsdale, AZ 85258  
Phone: 800-825-1221 ♦ Fax: 480-945-2603  
Email: [info@continentalflooring.com](mailto:info@continentalflooring.com)  
[www.continentalflooring.com](http://www.continentalflooring.com)

**GSA** Contract Holder  
GS-27F-0034R

