

Navajo

as manufactured by Shaw Contract



style: navajo
texture: pattern loop
product type: tile 24"x24"
fiber: eco solution q® nylon
backing: ecoworx® tile
dye method: 89% solution dyed / 11% space dyed
protective treatments: ssp® shaw soil protection
face Weight: 18.0
warranty: lifetime commercial limited

Color images may vary.
Please request sample before ordering.

cane



gilded



fused glass



urban jungle



absolute blu



make a splash



be jeweled



color my world



black to business



silver lining



9319 N. 94th Way, Suite 1000
Scottsdale, AZ 85258
Phone: 800-825-1221 ♦ Fax: 480-945-2603
Email: info@continentalflooring.com
www.continentalflooring.com



Navajo

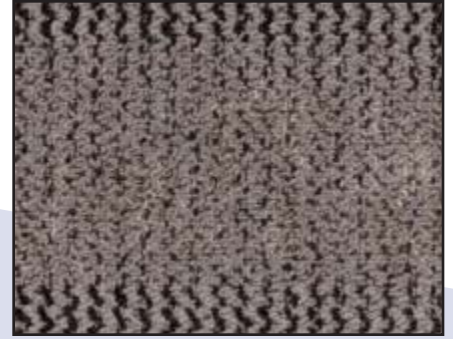
as manufactured by Shaw Contract



pistachio



sheer magnetic



metal guru



copper frost



chocolate craving



haute stuff



9319 N. 94th Way, Suite 1000
Scottsdale, AZ 85258
Phone: 800-825-1221 ♦ Fax: 480-945-2603
Email: info@continentalflooring.com
www.continentalflooring.com

GSA Contract Holder
GS-27F-0034R