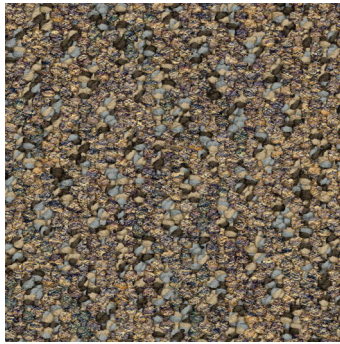


# Flagstaff



style: flagstaff  
 style number: 710T7 / 710T8  
 product type: 12' broadloom  
 construction: pattern loop  
 fiber: 100% eco solution Q® nylon  
 primary backing: synthetic  
 dye method: 83% solution dyed / 17% yarn dyed  
 tufted weight: 28.0 oz/yd<sup>2</sup>  
 average density: 9,421 oz/yd<sup>3</sup>  
 NSF 140 Gold; TARR 3.5 severe  
 warranty: lifetime commercial limited

**Swatches are enlarged to show product detail.  
 Screen colors also vary.  
 Please confirm your selection by requesting a physical sample.**



monument



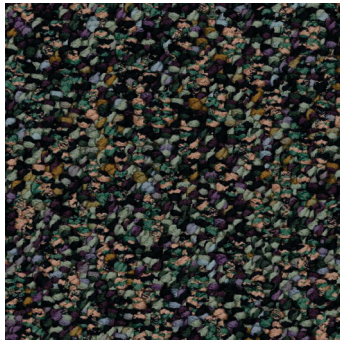
nature trail



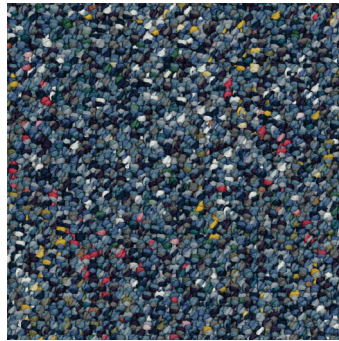
city hall



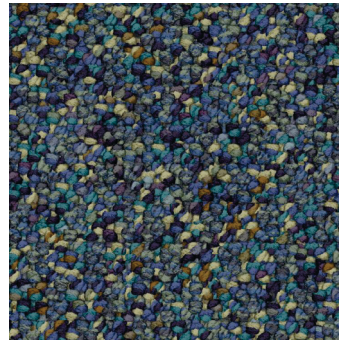
farm



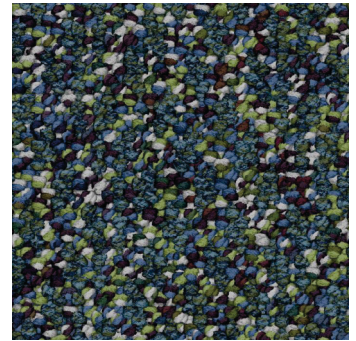
space camp



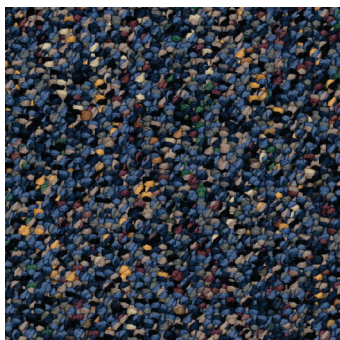
ball park



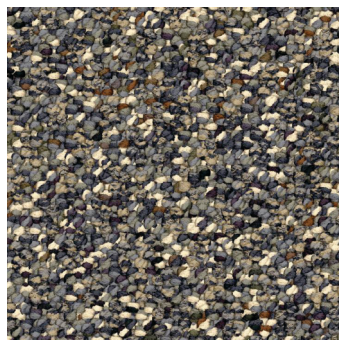
aquarium



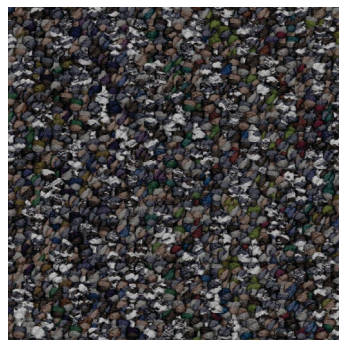
smithsonian



picnic



state capitol



observatory



theatre



9319 N. 94th Way, Suite 1000  
 Scottsdale, AZ 85258  
 Phone: 800-825-1221 ♦ Fax: 480-945-2603  
 Email: [info@continentalflooring.com](mailto:info@continentalflooring.com)  
[www.continentalflooring.com](http://www.continentalflooring.com)

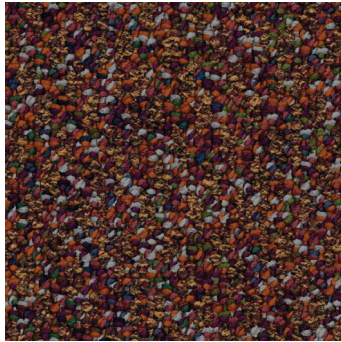
**GSA** Contract Holder  
 GS-27F-0034R



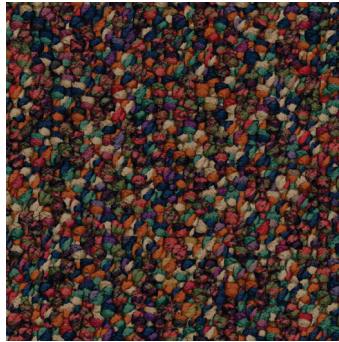
# Flagstaff



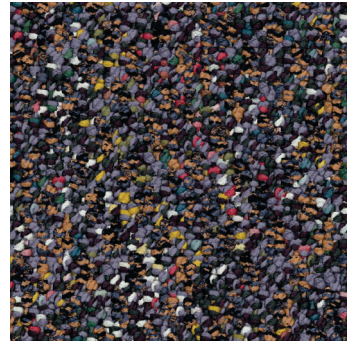
grand canyon



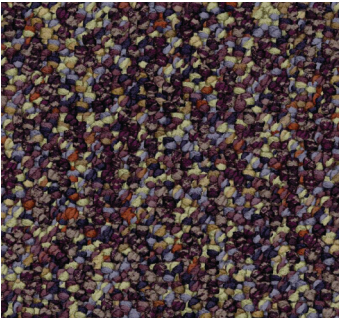
fire station



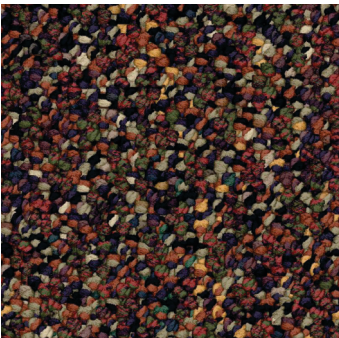
zoo



planetarium



art museum



sci-tek



**Swatches are enlarged to show product detail.  
Screen colors also vary.  
Please confirm your selection by requesting a physical sample.**



9319 N. 94th Way, Suite 1000  
Scottsdale, AZ 85258  
Phone: 800-825-1221 ♦ Fax: 480-945-2603  
Email: [info@continentalflooring.com](mailto:info@continentalflooring.com)  
[www.continentalflooring.com](http://www.continentalflooring.com)

**GSA** Contract Holder  
GS-27F-0034R