

Pima



cane

style: pima
style number: 700B4
NSF Platinum; TARR 3.5 Severe
texture: pattern loop
product type: 24" x 24" tile
fiber: eco solution q® nylon
backing: ecoworx® tile
protective treatment: ssp® shaw soil protection
dye method: 90% solution dyed / 10% space dyed
face weight: 18.0 oz./yd²
avg density: 7,624 oz./yd³
warranty: lifetime commercial limited

Swatches are enlarged to show product detail.
Screen colors also vary.

Please confirm your selection by requesting a physical sample.



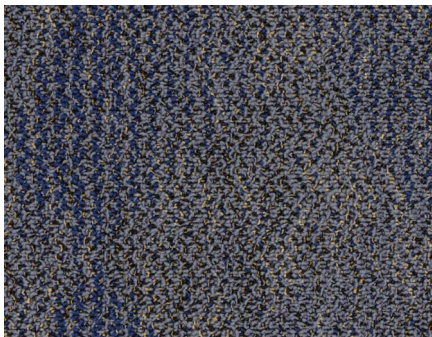
gilded



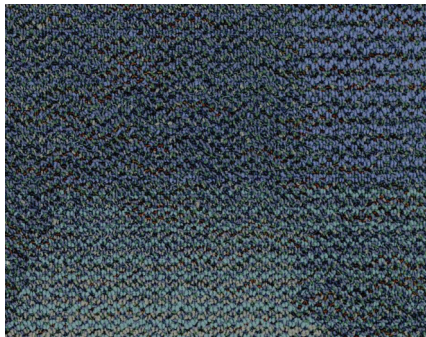
fused glass



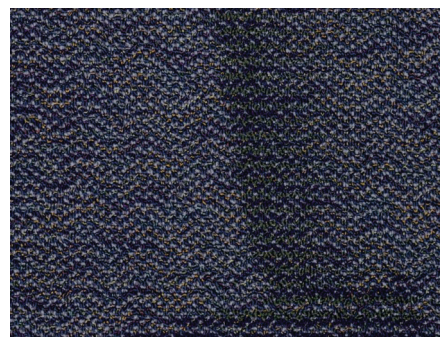
urban jungle



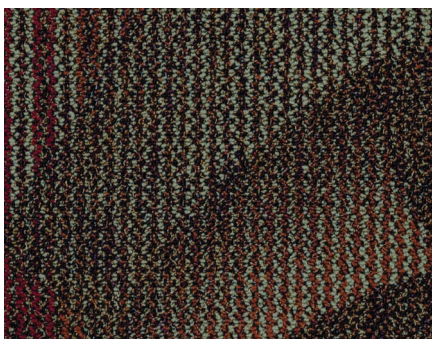
absolute blu



make a splash



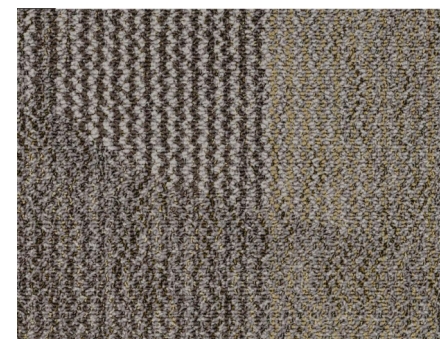
be jeweled



color my world



black to business



silver lining



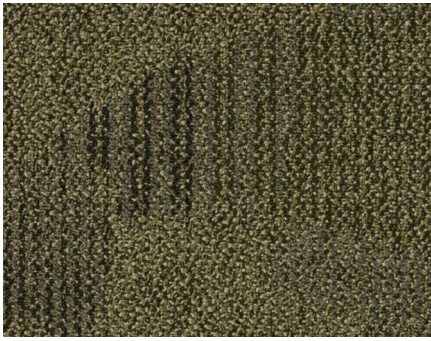
9319 N. 94th Way, Suite 1000
Scottsdale, AZ 85258
Phone: 800-825-1221 ♦ Fax: 480-945-2603
Email: info@continentalflooring.com
www.continentalflooring.com



Contract Holder

GS-27F-0034R

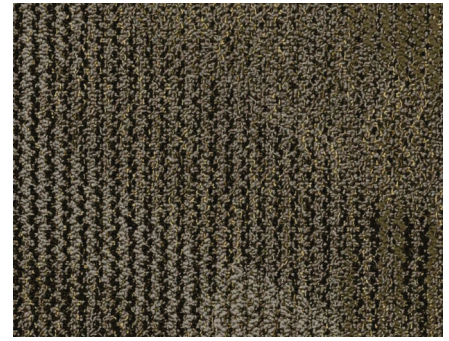
Pima



pistachio



sheer magnetic



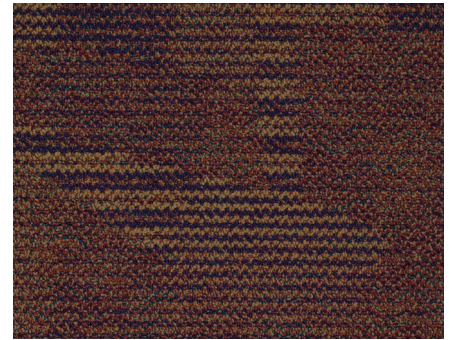
metal guru



copper frost



chocolate craving



haute stuff

Swatches are enlarged to show product detail.
Screen colors also vary.
Please confirm your selection by requesting a physical sample.



9319 N. 94th Way, Suite 1000
Scottsdale, AZ 85258
Phone: 800-825-1221 ♦ Fax: 480-945-2603
Email: info@continentalflooring.com
www.continentalflooring.com

 Contract Holder
GS-27F-0034R