

Winslow



style: winslow 710K5 (30 oz.) 710K6 (36 oz.)
product type: cut pile broadloom
fiber: 100% nylon
protective treatment: S.S.P.® Shaw Soil Protection
backing: classicbac®
dye method: piece dyed
face weight: 30 or 36 oz.
TARR 2.5 Moderate (30 oz.) / 2.0 Moderate (36 oz.)
static control: (AATCC 134) less than 3.5 kv, built-in
permanent conductive fiber
warranty: 10 year commercial wear warranty
greenlabel +

Swatches are enlarged to show product detail.
Screen colors also vary.

Please confirm your selection by requesting a physical sample.



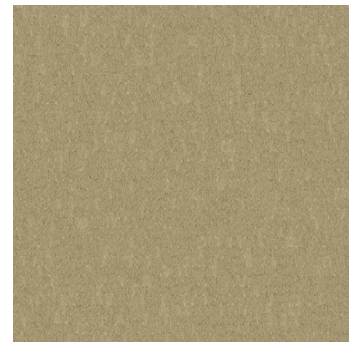
pale 32100



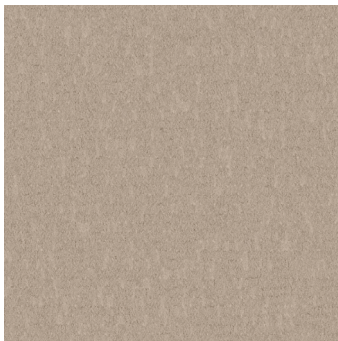
twill 32110



vanilla 32115



parchment 32120



white light 32142



software 32153



insert 32155



ciao bella 32156



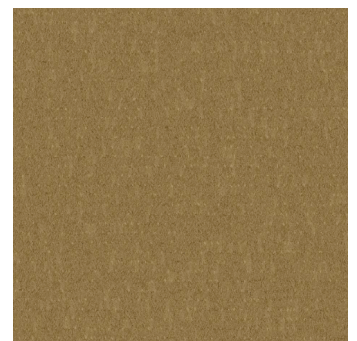
bare necessities 32157



sandalwood 32207



glow 32220



linen 32243

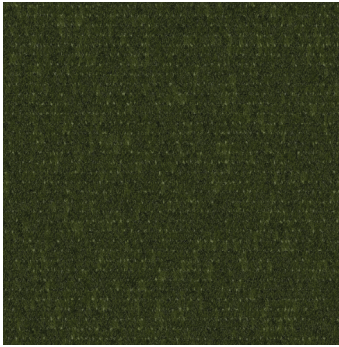


9319 N. 94th Way, Suite 1000
Scottsdale, AZ 85258
Phone: 800-825-1221 Fax: 480-945-2603
Email: info@continentalflooring.com
www.continentalflooring.com

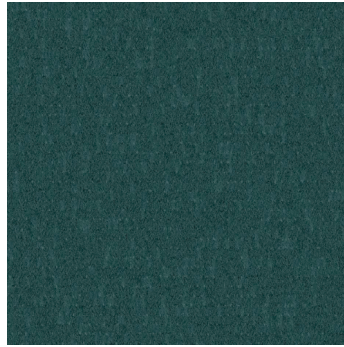
 Contract Holder
GS-27F-0034R

Winslow

Swatches are enlarged to show product detail.
Screen colors also vary.
Please confirm your selection by requesting a physical sample.



foliage 32314



splash 32315



exotic seasalt 32322



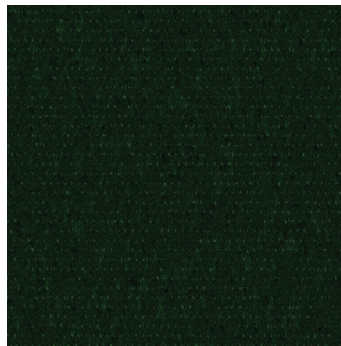
elephant 32325



envy 32340



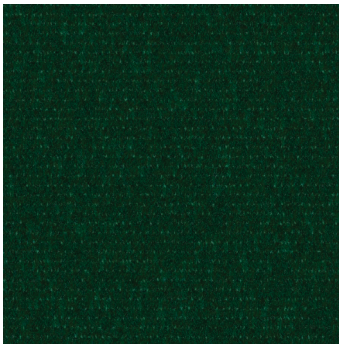
north sea 32343



view 32344



willow 32356



wireless 32366



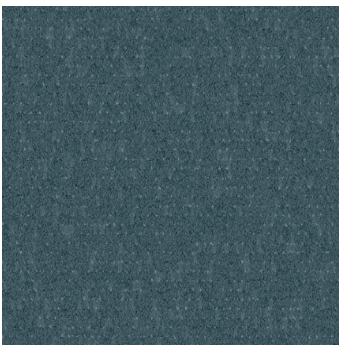
fennel 32370



spectrum 32461



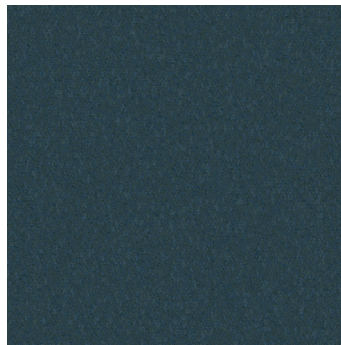
matrix 32462



chip 32464



net 32465



deep 32490



video port 32491

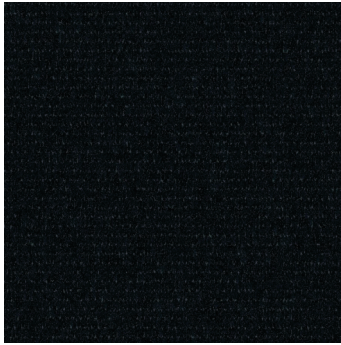


9319 N. 94th Way, Suite 1000
Scottsdale, AZ 85258
Phone: 800-825-1221 Fax: 480-945-2603
Email: info@continentalflooring.com
www.continentalflooring.com

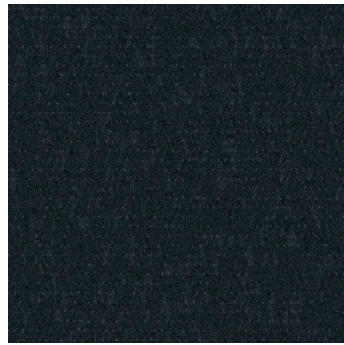
GSA Contract Holder
GS-27F-0034R

Winslow

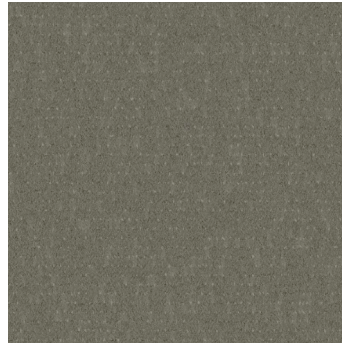
Swatches are enlarged to show product detail.
Screen colors also vary.
Please confirm your selection by requesting a physical sample.



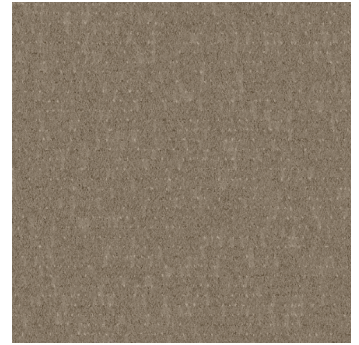
dusk 32496



shadow 32500



breeze 32505



micro 32510



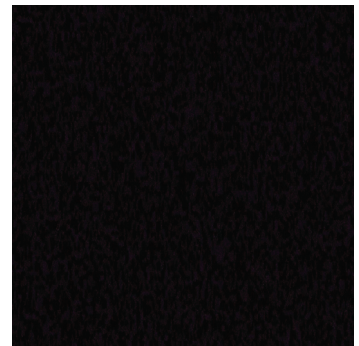
atmosfera 32521



steeling beauty 32524



modern 32544



heavy metal 32545



toggle 32546



macro 32583



escape 32591



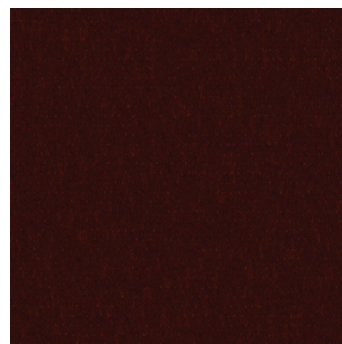
edit 32592



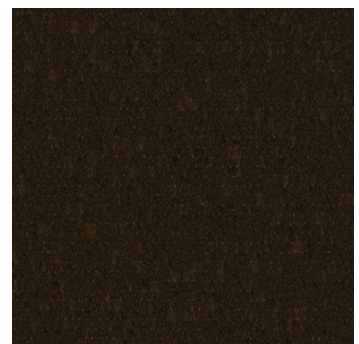
mouse 32595



latte 32705



fine clay 32708



wenge 32710



9319 N. 94th Way, Suite 1000
Scottsdale, AZ 85258
Phone: 800-825-1221 Fax: 480-945-2603
Email: info@continentalflooring.com
www.continentalflooring.com



Contract Holder

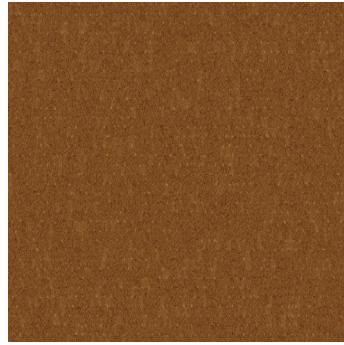
GS-27F-0034R

Winslow

Swatches are enlarged to show product detail.
Screen colors also vary.
Please confirm your selection by requesting a physical sample.



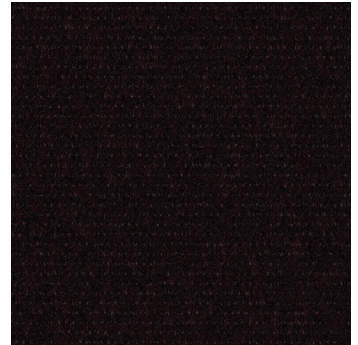
bleached leather 32713



saddle 32721



lava 32725



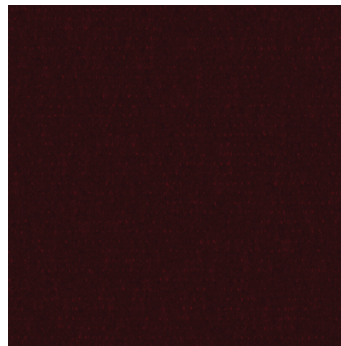
double espresso 32731



vapor 32742



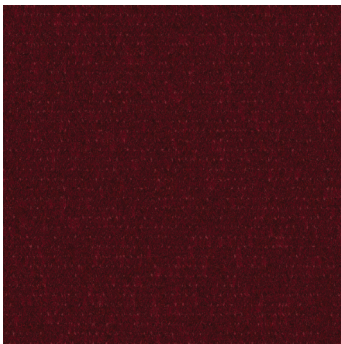
birch 32755



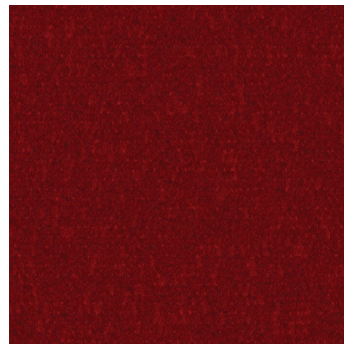
wine 32843



mirage 32844



encrypt 32845



barberry 32846



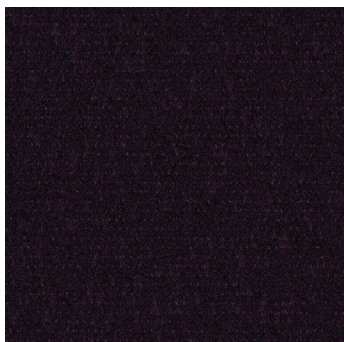
crushed berry 32883



accelerator 32891



shale 32904



cybernaut 32940



aura 32944



beta 32992



9319 N. 94th Way, Suite 1000
Scottsdale, AZ 85258
Phone: 800-825-1221 Fax: 480-945-2603
Email: info@continentalflooring.com
www.continentalflooring.com



Contract Holder

GS-27F-0034R