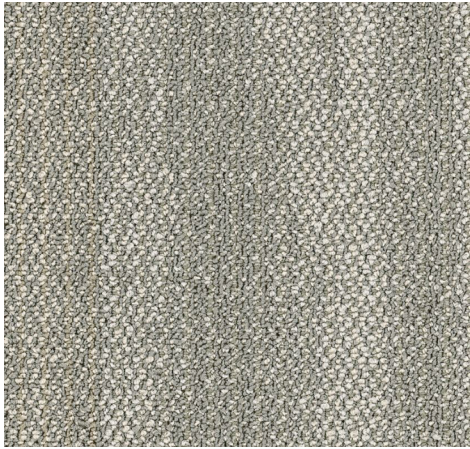


# Bisbee

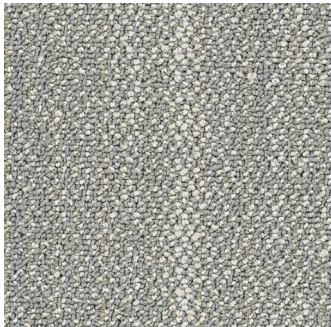


style: bisbee  
style number: 800Z1  
product type: carpet tile  
construction: multilevel pattern loop  
fiber: eco solution Q® nylon  
primary backing: synthetic  
dye method: 100% solution dyed  
tufted yarn weight: 17 oz / yd<sup>2</sup>  
avg density: 7,948 oz / yd<sup>3</sup>  
TARR 3.5 severe; NSF 140 Gold  
warranty: lifetime commercial ltd

scenic

Swatches are enlarged to show product detail.  
Screen colors also vary.

Please confirm your selection by requesting a physical sample.



ocean



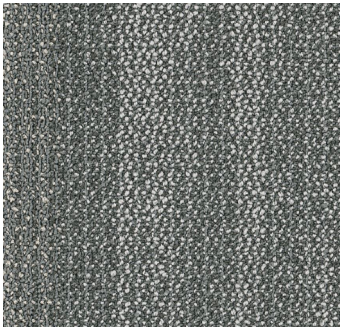
earthy



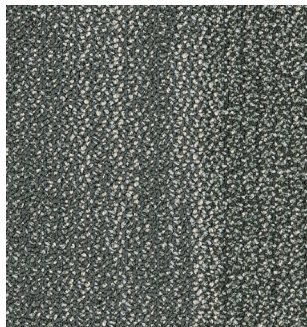
metro



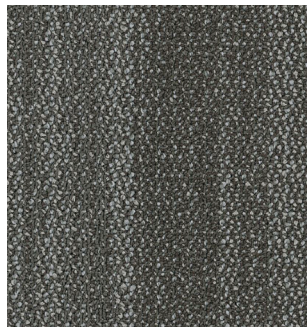
village



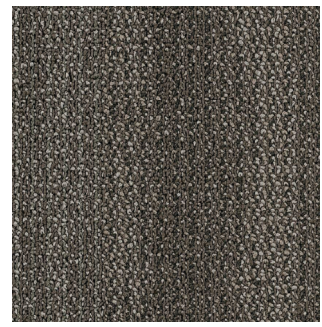
island



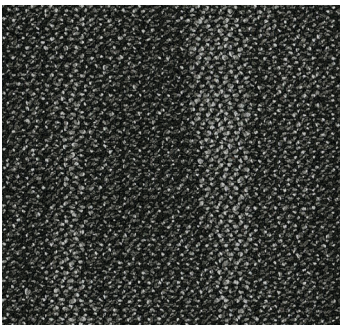
adventure



urban



market



skyline



9319 N. 94th Way, Suite 1000  
Scottsdale, AZ 85258  
Phone: 800-825-1221 ♦ Fax: 480-945-2603  
Email: [info@continentalflooring.com](mailto:info@continentalflooring.com)  
[www.continentalflooring.com](http://www.continentalflooring.com)





9319 N. 94th Way, Suite 1000  
Scottsdale, AZ 85258  
Phone: 800-825-1221 ♦ Fax: 480-945-2603  
Email: [info@continentalflooring.com](mailto:info@continentalflooring.com)  
[www.continentalflooring.com](http://www.continentalflooring.com)

 **Contract Holder**  
GS-27F-0034R