

# Clean Stride<sup>®</sup> Mats

## Specialty Mats • Indoor

The Clean Stride mat features a WaterHog mat followed by an adhesive surface that captures smaller dust and dirt. Just two steps on a Clean Stride adhesive insert removes over 90% of dirt particles, making this mat ideal for clean rooms, healthcare facilities, school gymnasiums, server rooms, and other areas sensitive to dirt and dust particles.



- Raised nubs on the WaterHog mat remove dirt and moisture from shoes and trap it below foot level while the adhesive insert removes any remaining dirt or dust particles
- Adhesive inserts sold separately, each with 60 numbered layers
- Available with smooth or cleated backing
- Not recommended for wet areas



Aquamarine



Bluestone



Bordeaux



Camel



Charcoal



Dark Brown



Evergreen



Gold



Light Green



Medium Blue



Medium Brown



Medium Grey



Navy



Orange



Purple



Red/Black



Solid Red



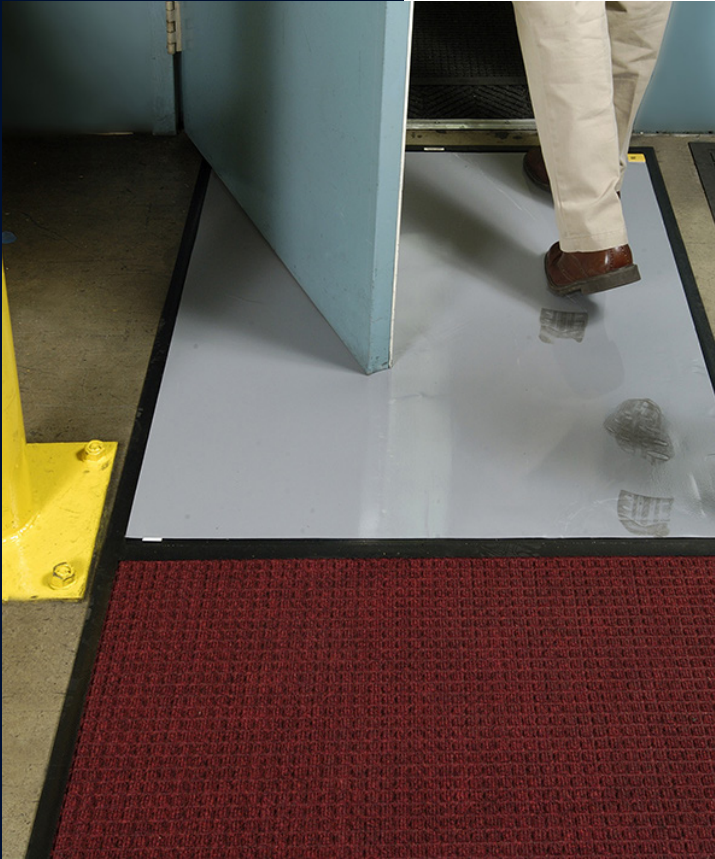
White



Yellow

# Clean Stride® Mats

Specialty Mats • Indoor



**Product No. 410 (frame only)**  
**Product No. 411 (frame with WaterHog)**

Frame Type	Size (in.)	Shipping Weight
Rubber frame*	26.5" x 32"	5 lbs.
Rubber frame**	36.5" x 46"	9 lbs.
WaterHog with rubber frame*	26.5" x 63.5"	11 lbs.
WaterHog with rubber frame**	36.5" x 92.5"	20 lbs.

Clean Stride® mat frames do not include Clean Stride® inserts

\* Use 24" x 30" inserts

\*\* Use 34" x 44" inserts

**Product No. 412 (inserts)**

Unit	Size (in.)	Shipping Weight
1 - 60 layer insert	24" x 30"	4 lbs.
1 - 60 layer insert	34" x 44"	11 lbs.

Please note, mat sizes are approximate as rubber shrinks and expands in conjunction with temperature and time.

Tolerable manufacturing size variance is 3-5%.



**WaterHog Mat**

Raised nubs remove dirt & moisture trapping it below shoe level

**Adhesive Insert**

Adhesive insert captures smaller dust and dirt