

# Canyon

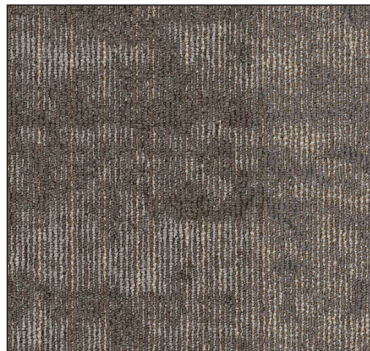


product type: carpet tile  
style: canyon  
style number: 802N4  
construction: multi-level pattern loop  
fiber: eco solution q® nylon  
dye method: 100% solution dyed  
tufted weight: 16 oz./yd<sup>2</sup>  
average density: 4,431 oz./yd  
NSF Gold; TARR 3.5 severe  
warranty: 10 year commercial limited

Swatches are enlarged to show product detail.  
Screen colors also vary.

Please confirm your selection by requesting a physical sample.

metallic beige



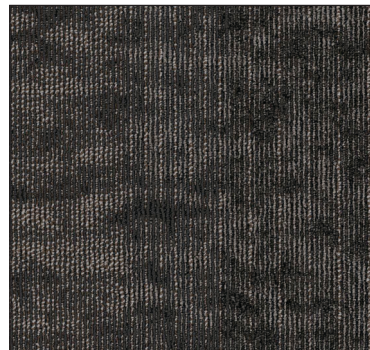
mirror grey



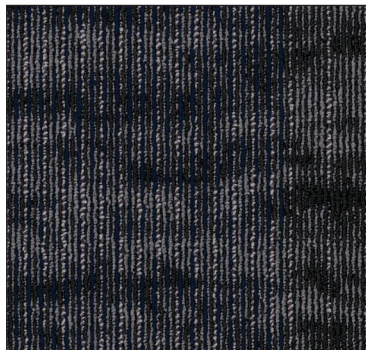
sterling silver



shiny pebble



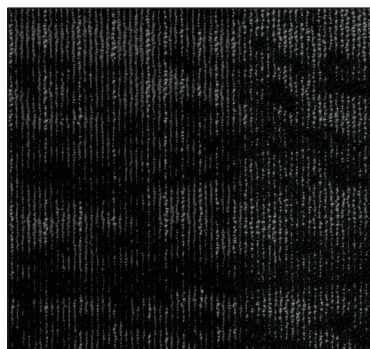
steel grey



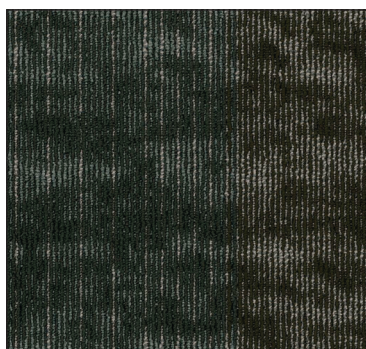
shimmery blue



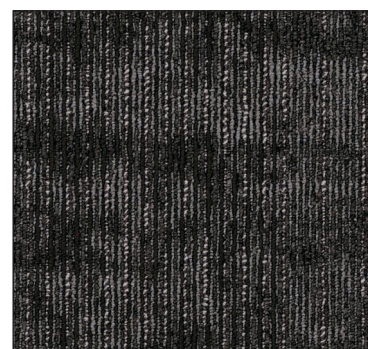
glossy charcoal



chrome black



glassy green



polished stone



9319 N. 94th Way, Suite 1000  
Scottsdale, AZ 85258  
Phone: 800-825-1221 ♦ Fax: 480-945-2603  
Email: [info@continentalflooring.com](mailto:info@continentalflooring.com)  
[www.continentalflooring.com](http://www.continentalflooring.com)

# Canyon

Swatches are enlarged to show product detail.  
Screen colors also vary.  
Please confirm your selection by requesting a physical sample.



9319 N. 94th Way, Suite 1000  
Scottsdale, AZ 85258  
Phone: 800-825-1221 ♦ Fax: 480-945-2603  
Email: [info@continentalflooring.com](mailto:info@continentalflooring.com)  
[www.continentalflooring.com](http://www.continentalflooring.com)