

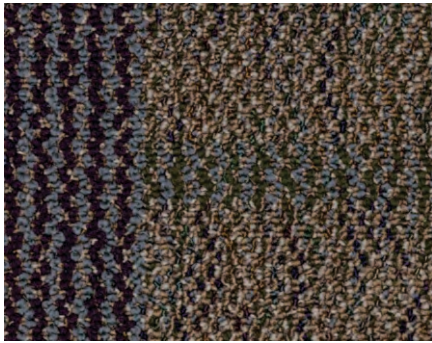
Navajo



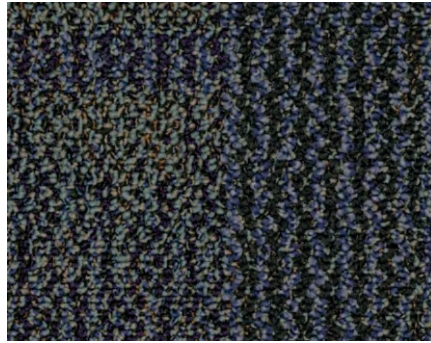
style: navajo
style number: 700A9
NSF platinum; TARR 3.5 severe
texture: pattern loop
product type: tile 24 x 24"
fiber: eco solution q® nylon
backing: ecoworx® tile
dye method: 89% solution dyed / 11% space dyed
protective treatments: ssp® shaw soil protection
face weight: 18.0 oz/ yd²; avg density 7624 oz. / yd³
warranty: lifetime commercial limited

Swatches are enlarged to show product detail.
Screen colors also vary.
Please confirm your selection by requesting a physical sample.

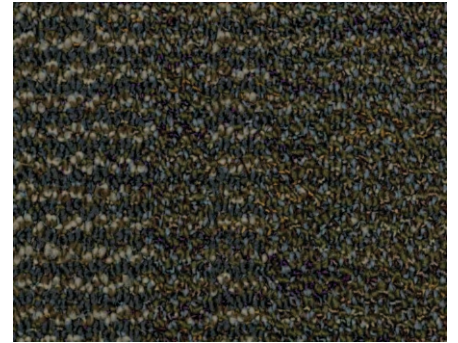
cane



gilded



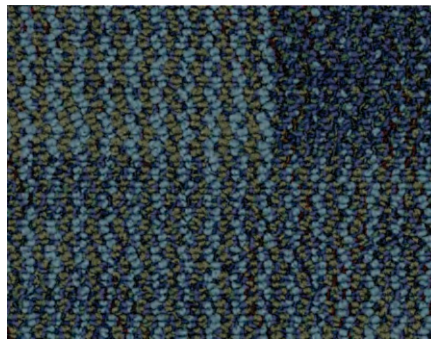
fused glass



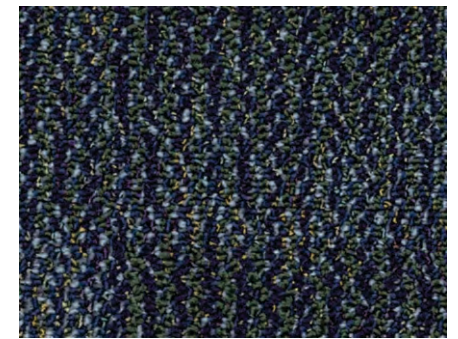
urban jungle



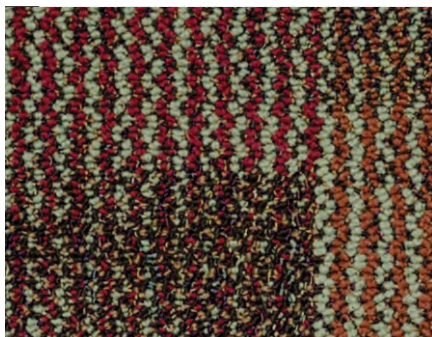
absolute blu



make a splash



be jeweled



color my world



black to business



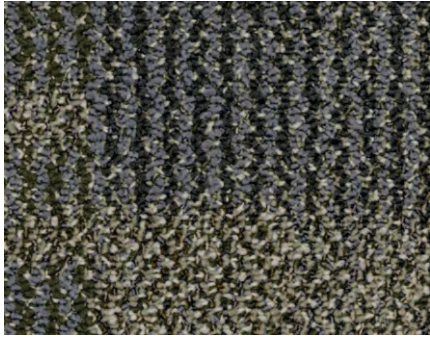
silver lining



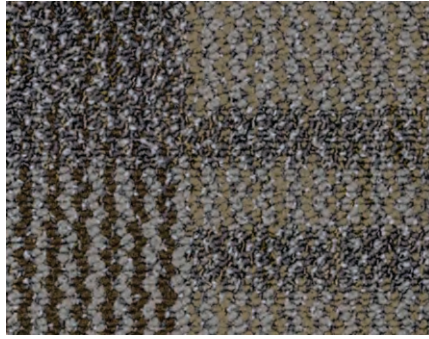
9319 N. 94th Way, Suite 1000
Scottsdale, AZ 85258
Phone: 800-825-1221 ♦ Fax: 480-945-2603
Email: info@continentalflooring.com
www.continentalflooring.com



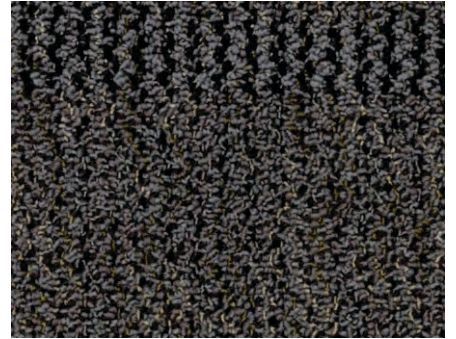
Navajo



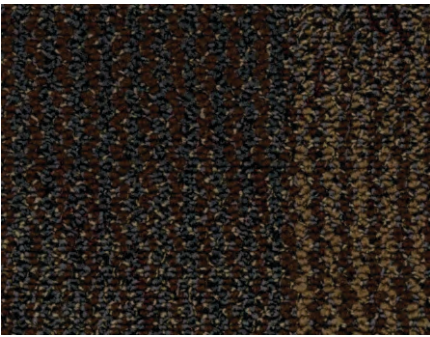
pistachio



sheer magnetic



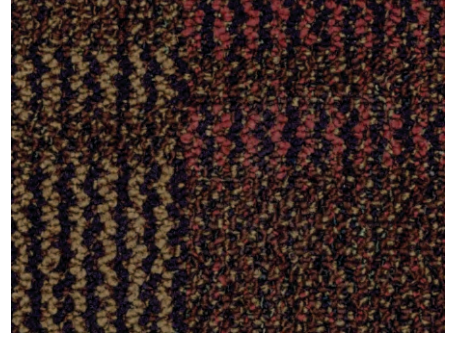
metal guru



copper frost



chocolate craving



haute stuff



9319 N. 94th Way, Suite 1000
Scottsdale, AZ 85258
Phone: 800-825-1221 ♦ Fax: 480-945-2603
Email: info@continentalflooring.com
www.continentalflooring.com

