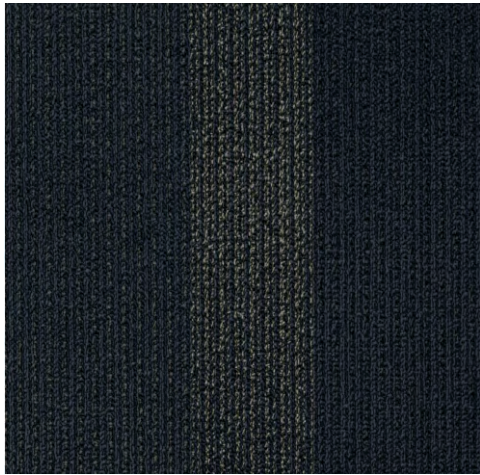


# Pinetop

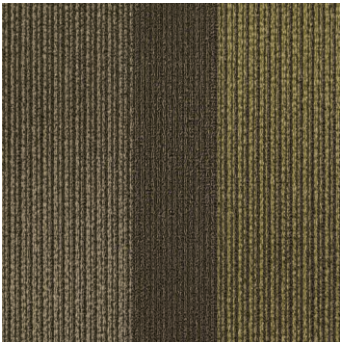


style: pinetop  
style number: 710K3  
NSF Platinum; TARR 3.5 Severe  
product type: modular 24x24  
texture: multi-level pattern loop  
fiber: eco solution q® nylon  
backing: ecoworx® tile  
dye method: 100% solution dyed  
face weight: 17 oz. / yd<sup>2</sup>  
average density: 5,058 oz. / yd<sup>3</sup>  
warranty: lifetime commercial limited

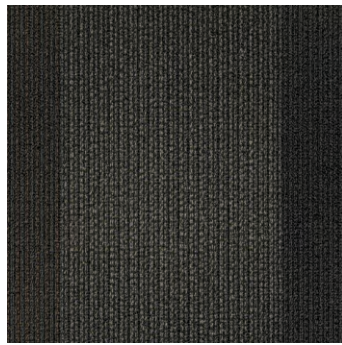
Water

Swatches are enlarged to show product detail.  
Screen colors also vary.

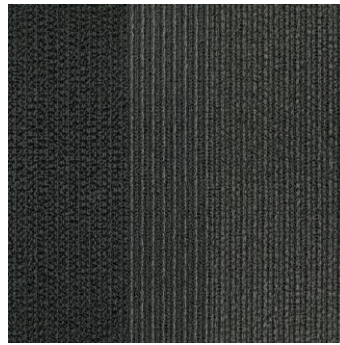
Please confirm your selection by requesting a physical sample.



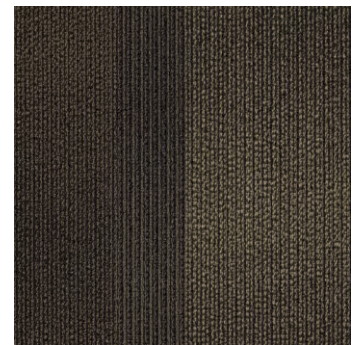
Season



Pepper



Stipple



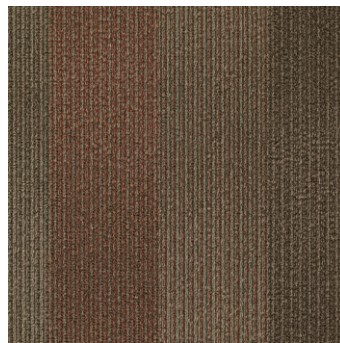
Tortoise Shell



Marble



Dapple



Mosaic



9319 N. 94th Way, Suite 1000  
Scottsdale, AZ 85258  
Phone: 800-825-1221 ♦ Fax: 480-945-2603  
Email: [info@continentalflooring.com](mailto:info@continentalflooring.com)  
[www.continentalflooring.com](http://www.continentalflooring.com)



Contract Holder  
GS-03F-001BA