

Juniper II

Luxury Vinyl Tile (LVT)

30 Mil
style: Juniper II
style number: vy229
construction: Heavy Commercial LVT
overall thickness: 0.118 in
wear layer thickness: 30 mil (0.03 in)
dimensions: 5.96 in x 48 in
warranty: 15 year commercial
limited warranty

20 Mil
style: Juniper II
style number: vy232
construction: Multilayer SPC
overall thickness: 0.157 in
wear layer thickness: 20 mil (0.02 in)
dimensions: 7 in x 48 in
warranty: 15 year commercial
limited warranty

12 Mil
style: Juniper II
style number: 1010v
construction: Light Commercial LVT
overall thickness: 0.098 in
wear layer thickness: 12 mil (0.012 in)
dimensions: 6 in x 48 in
warranty: 7 year commercial

20 Mil
style: Juniper II
style number: 1011v
construction: Heavy Commercial LVT
overall thickness: 0.098 in
wear layer thickness: 20 mil (0.02 in)
dimensions: 5.96 in x 48 in
warranty: 15 year commercial
limited warranty

20 Mil 5 Mm
style: Juniper II
style number: vy231
construction: Heavy Commercial LVT
overall thickness: 0.197 in
wear layer thickness: 20 mil (0.02 in)
dimensions: 5.96 in x 48 in
warranty: 15 year commercial
limited warranty



Swatches may be enlarged and screen colors may vary. Please order a sample to confirm your selection.



9319 N. 94th Way, Suite 1000
Scottsdale, AZ 85258
Phone: 800-825-1221 Fax: 480-945-2603
Email: info@continentalflooring.com
www.continentalflooring.com



Contract Holder
GS-03F-001BA

Juniper II



willow 00170



thatch 00173



ash 00174



saffron 00230



trail 00256



olive 00350



spruce 00360



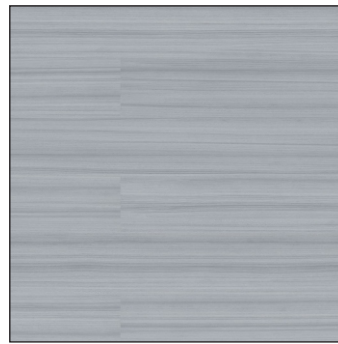
aqua 00370



azure 00400



ink 00450



slate 00540



shade 00564



root 00568



timber 00572



graphite 00580



terra 00600

Swatches may be enlarged and screen colors may vary. Please order a sample to confirm your selection.

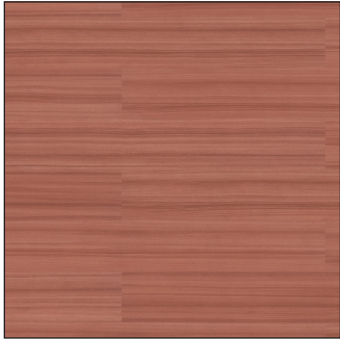


9319 N. 94th Way, Suite 1000
Scottsdale, AZ 85258
Phone: 800-825-1221 Fax: 480-945-2603
Email: info@continentalflooring.com
www.continentalflooring.com



Contract Holder
GS-03F-001BA

Juniper II



redwood 00650



birch 00684



natural 00710



lodge 00740



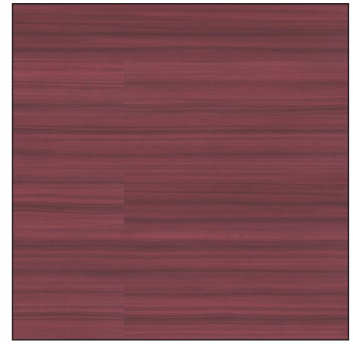
grove 00769



nest 00774



echo 00775



cherry 00850



summit 05012



orchard 05013



lark 05016



aspen 05019



sequoia 07003



sumac 07004



alder 07005



thicket 07008

Swatches may be enlarged and screen colors may vary. Please order a sample to confirm your selection.



9319 N. 94th Way, Suite 1000
Scottsdale, AZ 85258
Phone: 800-825-1221 Fax: 480-945-2603
Email: info@continentalflooring.com
www.continentalflooring.com



Contract Holder
GS-03F-001BA