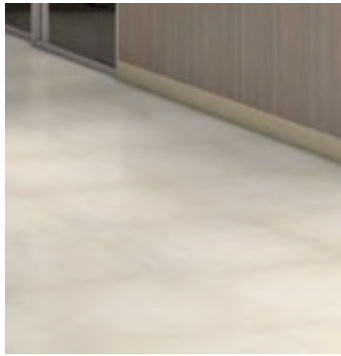
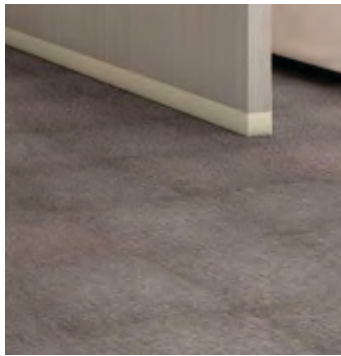


# Ocotillo



burlap



fiber



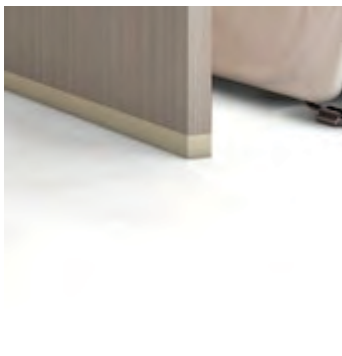
jute



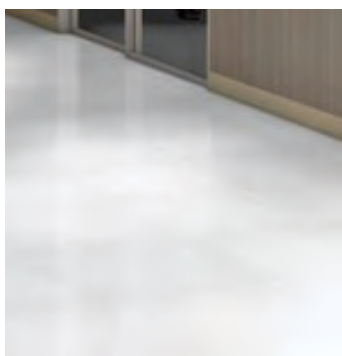
black tie



ocotillo



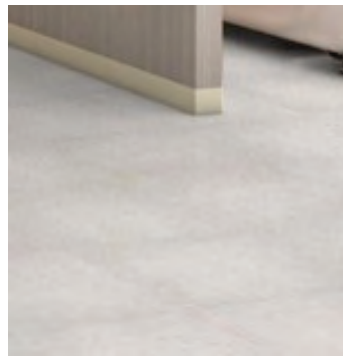
canvas



muslin



linen



flax

style: ocotillo  
product type: Luxury Vinyl Tile (LVT)  
size: 18" x 18"  
overall thickness: 3 mm thickness, 1/8"  
wear layer thickness: 20 mil (0.5mm)  
warranty: 10-year limited commercial wear

Color images may vary.  
Please request sample before ordering.



9319 N. 94th Way, Suite 1000  
Scottsdale, AZ 85258  
Phone: 800-825-1221 Fax: 480-945-2630  
Email: [info@continentalflooring.com](mailto:info@continentalflooring.com)  
[www.continentalflooring.com](http://www.continentalflooring.com)



# Sage



smoke



slate



vapor



haze

style: sage  
style number: 0389V  
product type: Luxury Vinyl Tile (LVT)  
size: 18" x 18"  
overall thickness: 3 mm thickness, 0.125"  
wear layer thickness: 20 mil (0.5mm)  
warranty: 10-year limited commercial wear

Swatches are enlarged to show product detail.  
Screen colors also vary.  
Please confirm your selection by requesting a physical sample.



industrial



zinc



cinder



viridian



sunset



buckskin



leather



mesa



9319 N. 94th Way, Suite 1000  
Scottsdale, AZ 85258  
Phone: 800-825-1221 Fax: 480-945-2630  
Email: [info@continentalflooring.com](mailto:info@continentalflooring.com)  
[www.continentalflooring.com](http://www.continentalflooring.com)

